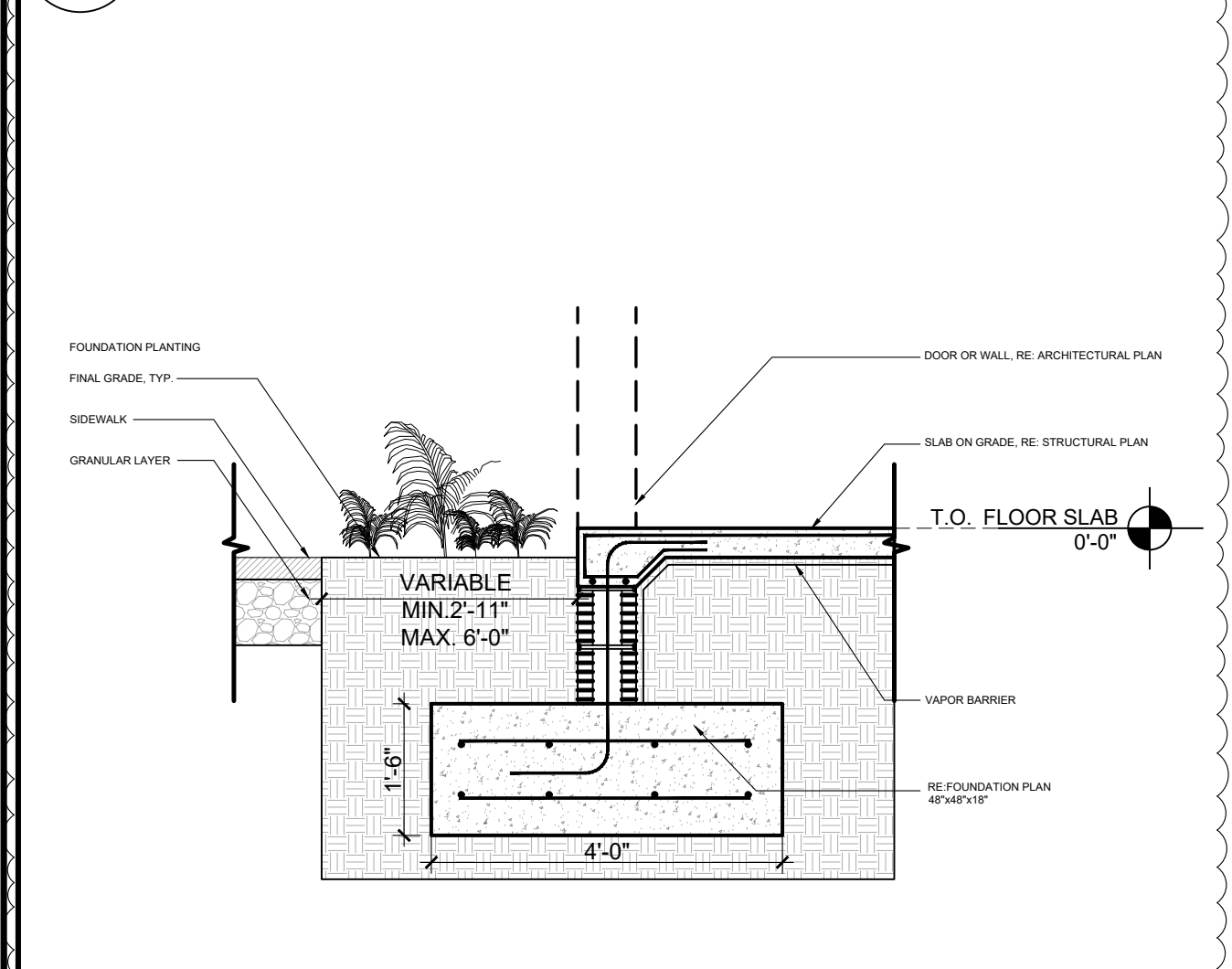


11 WALL FOOTING / PLANTING DETAIL  
SCALE: 1/2" = 1'-0"



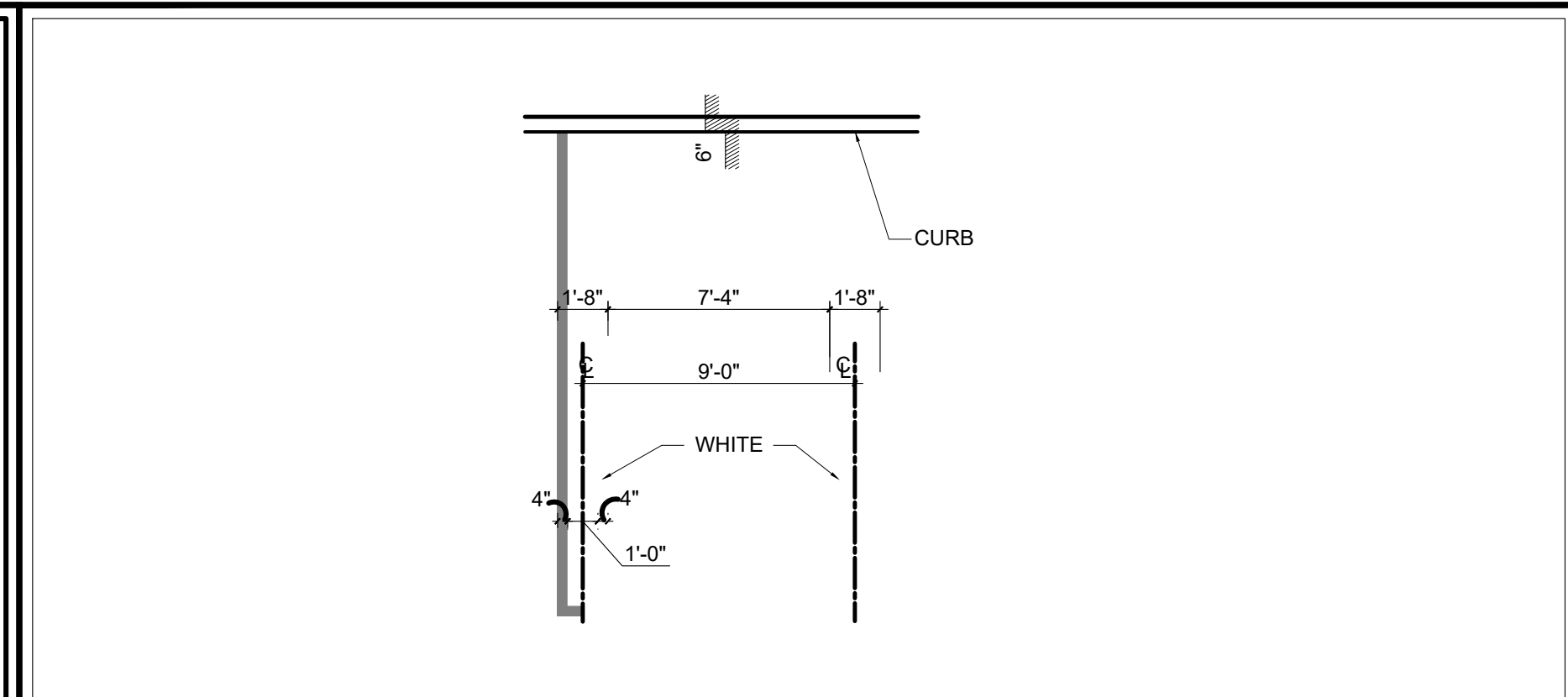
12 FOOTING / PLANTING DETAIL  
SCALE: 1/2" = 1'-0"

5 ACCESSIBLE RAMP DETAILS  
SCALE: 3/8" = 1'-0"

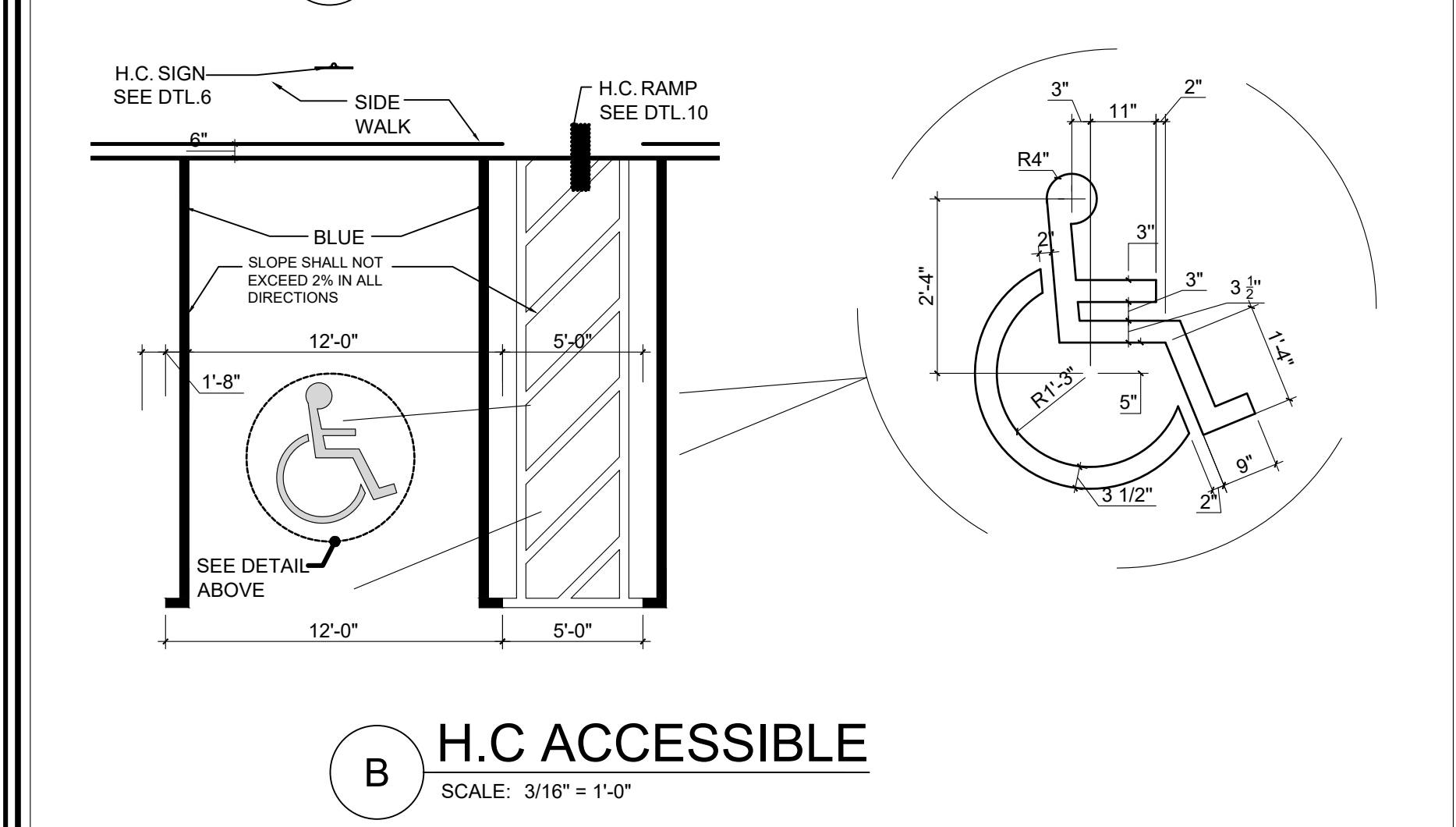
CFR TITLE 28 CHAPTER I PART 36 4.29.2: DETECTABLE WARNINGS ON WALKING SURFACES. DETECTABLE WARNINGS SHALL CONSIST OF RAISED TRUNCATED DOMES WITH A DIAMETER OF NOMINAL 0.9 IN (23 MM), A HEIGHT OF NOMINAL 0.2 IN (5 MM) AND A CENTER-TO-CENTER SPACING OF NOMINAL 2.35 IN (60 MM) AND SHALL CONTRAST VISUALLY WITH ADJOINING SURFACES, EITHER LIGHT-ON-DARK, OR DARK-ON-LIGHT. THE MATERIAL USED TO PROVIDE CONTRAST SHALL BE AN INTEGRAL PART OF THE WALKING SURFACE.

NOTES:

1. DETECTABLE WARNING PER FDOT INDEX # 304
2. INSTALLATION SHALL COMPLY WITH FBC 11-4.29.2
3. WHERE A WALK CROSSES OR ADJOINS A VEHICULAR WAY, THE BOUNDARY BETWEEN THE AREAS SHALL BE DEFINED BY A CONTINUOUS DETECTABLE WARNING WHICH IS 36 INCHES WIDE.



A STANDARD PARKING SPACE  
SCALE: 3/16" = 1'-0"



B H.C. ACCESSIBLE  
SCALE: 3/16" = 1'-0"

2 PARKING SPACE DETAIL  
SCALE: 3/16" = 1'-0"

TOP PORTION SHALL HAVE A REFLECTIVE BLUE, BACKGROUND WITH WHITE REFLECTIVE SYMBOLS AND BORDER.

TYPICAL CHARACTER AND SYMBOLS CONSTRAINING BACKGROUND COLORS TO BE UNIVERSAL STANDARDS.

MOUNT: GALV. POST LOCATION: AT EACH ACCESSIBLE PARKING SPACE

TOP PORTION SHALL HAVE A REFLECTIVE BLUE, BACKGROUND WITH WHITE REFLECTIVE SYMBOLS AND BORDER

BOTTOM PORTION SHALL HAVE A REFLECTIVE WHITE, BACKGROUND WITH BLACK OPAQUE LEGEND AND BORDER.

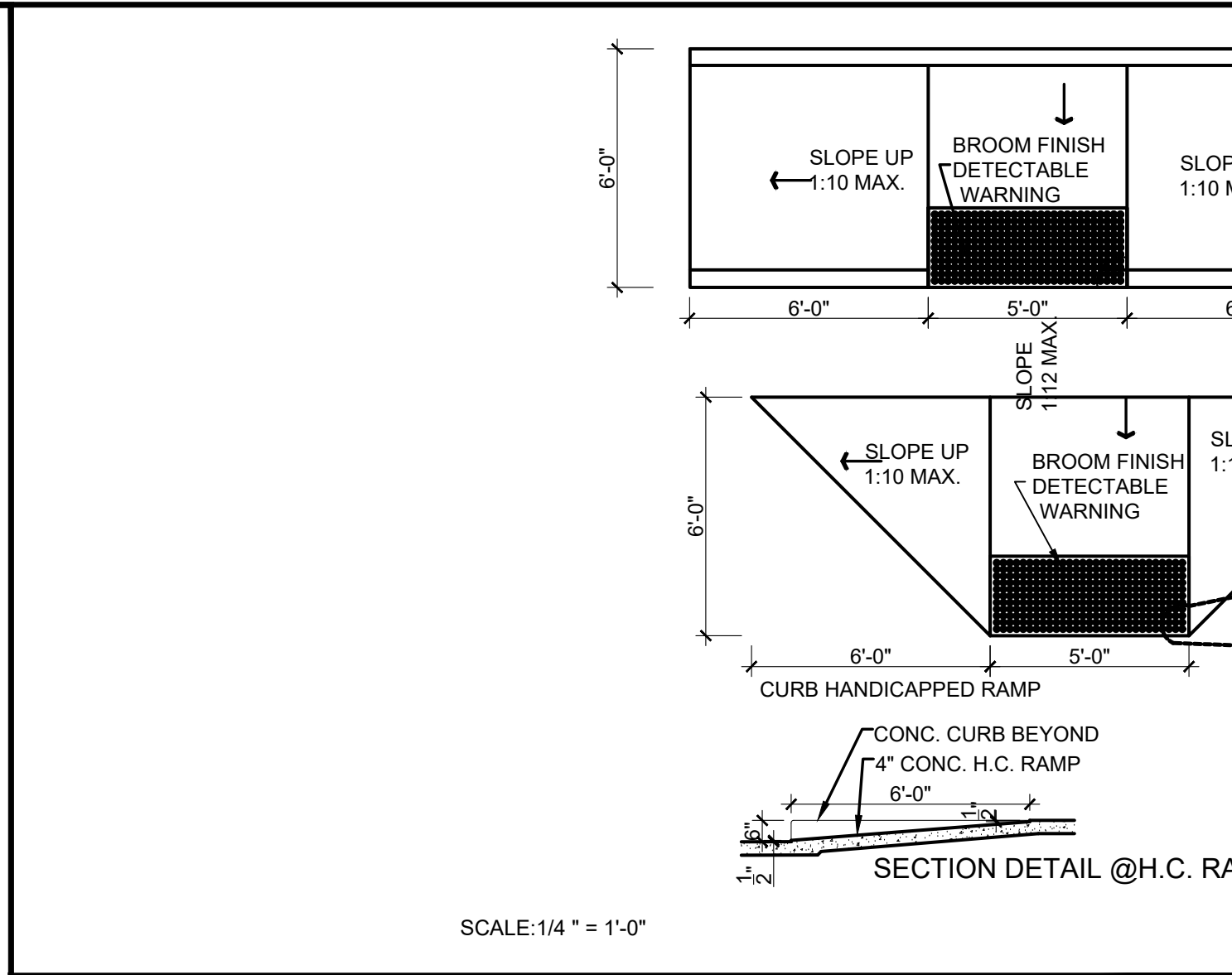
9'-0" LONG GALVANIZED STEEL (UNPAINTED) "U" IRON POST 3 LB/FT WEIGHT BY "FRANKLIN STEEL" OR APPROVED EQUAL.

3000 PSI CONCRETE POST BASE (CAST IN PLACE)

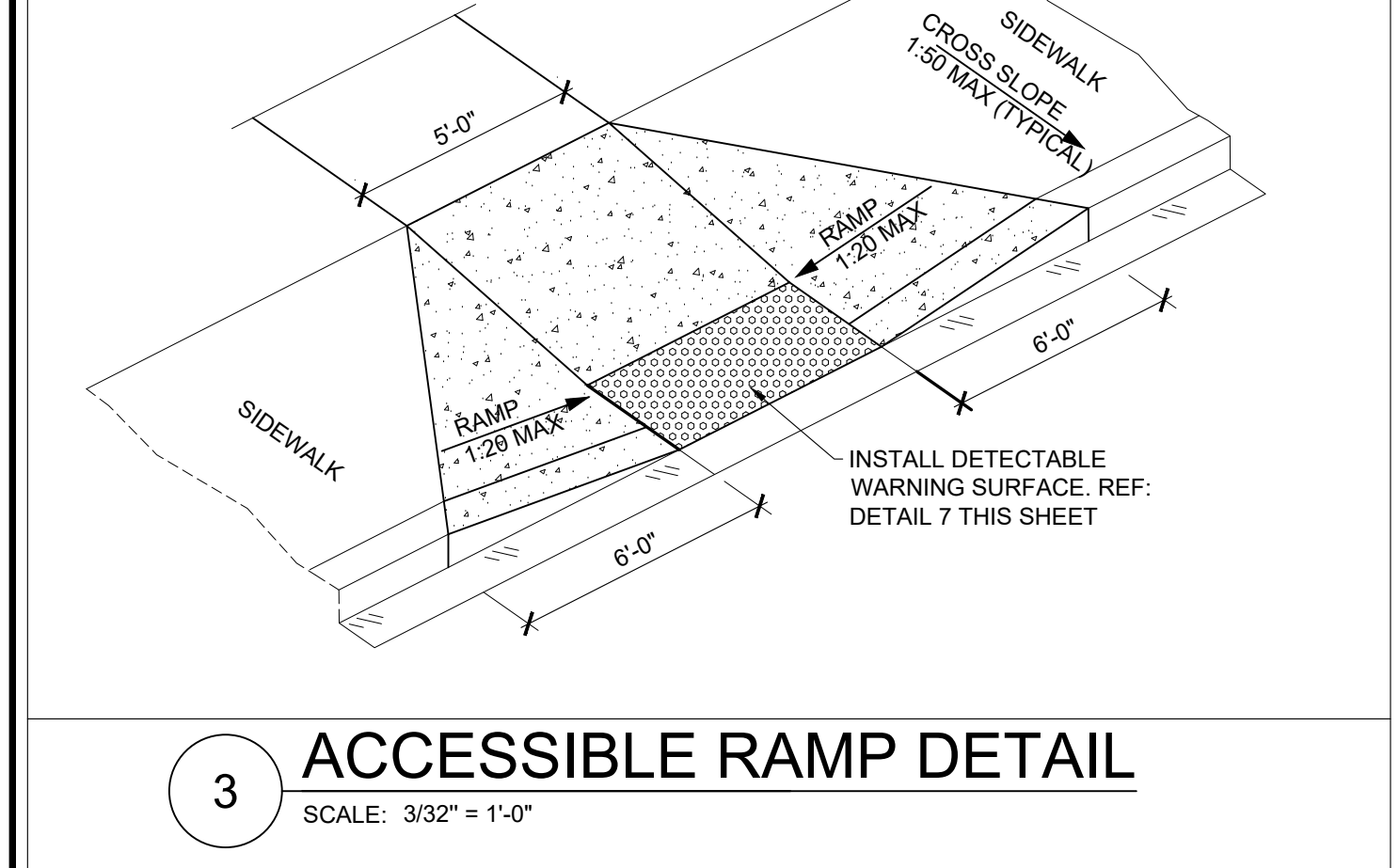
9'-0" LONG GALVANIZED STEEL (UNPAINTED) "U" IRON POST 3 LB/FT WEIGHT BY "FRANKLIN STEEL" OR APPROVED EQUAL.

2'-6" LONG 3 LB/FT "U" IRON GALVANIZED

SECTION "A"



3 ACCESSIBLE RAMP DETAIL  
SCALE: 3/32" = 1'-0"



4 ACCESSIBLE RAMP DETAIL  
SCALE: 3/32" = 1'-0"

1 "D" CURB  
SCALE: 1" = 1'-0"

1 1/2" ASPHALTIC CONCRETE SURFACE COURSE, REFER TO CIVIL DWG'S

8" LIME ROCK BASE COMPACTED TO 95% OF MAXIMUM DENSITY, REFER TO CIVIL DWG'S

STABILIZED SUBGRADE COMPACTED TO 95% OF MAXIMUM DENSITY, REFER TO CIVIL DWG'S

CONC. CURB. SEE CURB TYPE "D" ON CIVIL DWG'S SHEET PD-11

9 "F" CURB DETAIL  
SCALE: 3/4" = 1'-0"

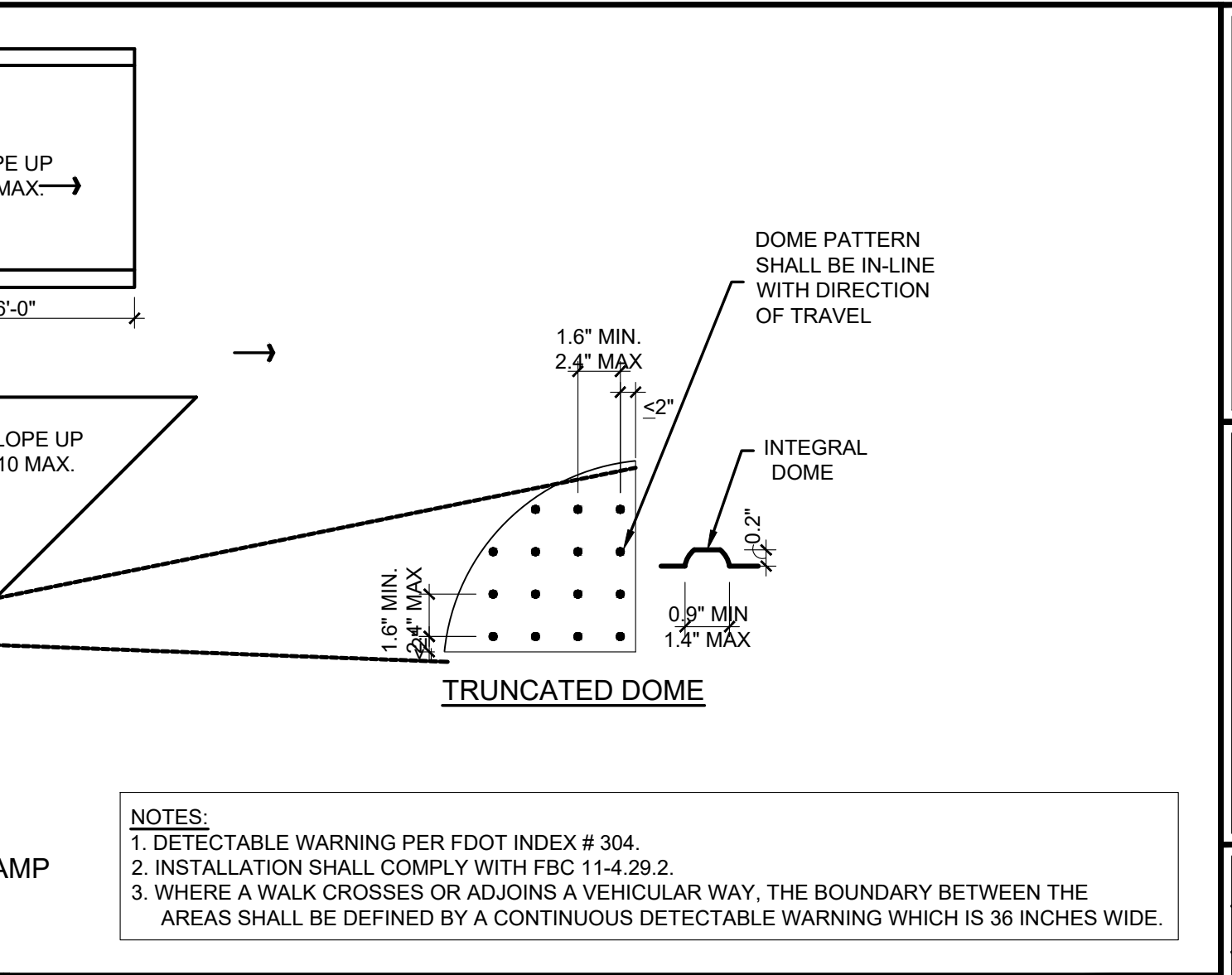
4" CONC. SIDEWALK

CURB

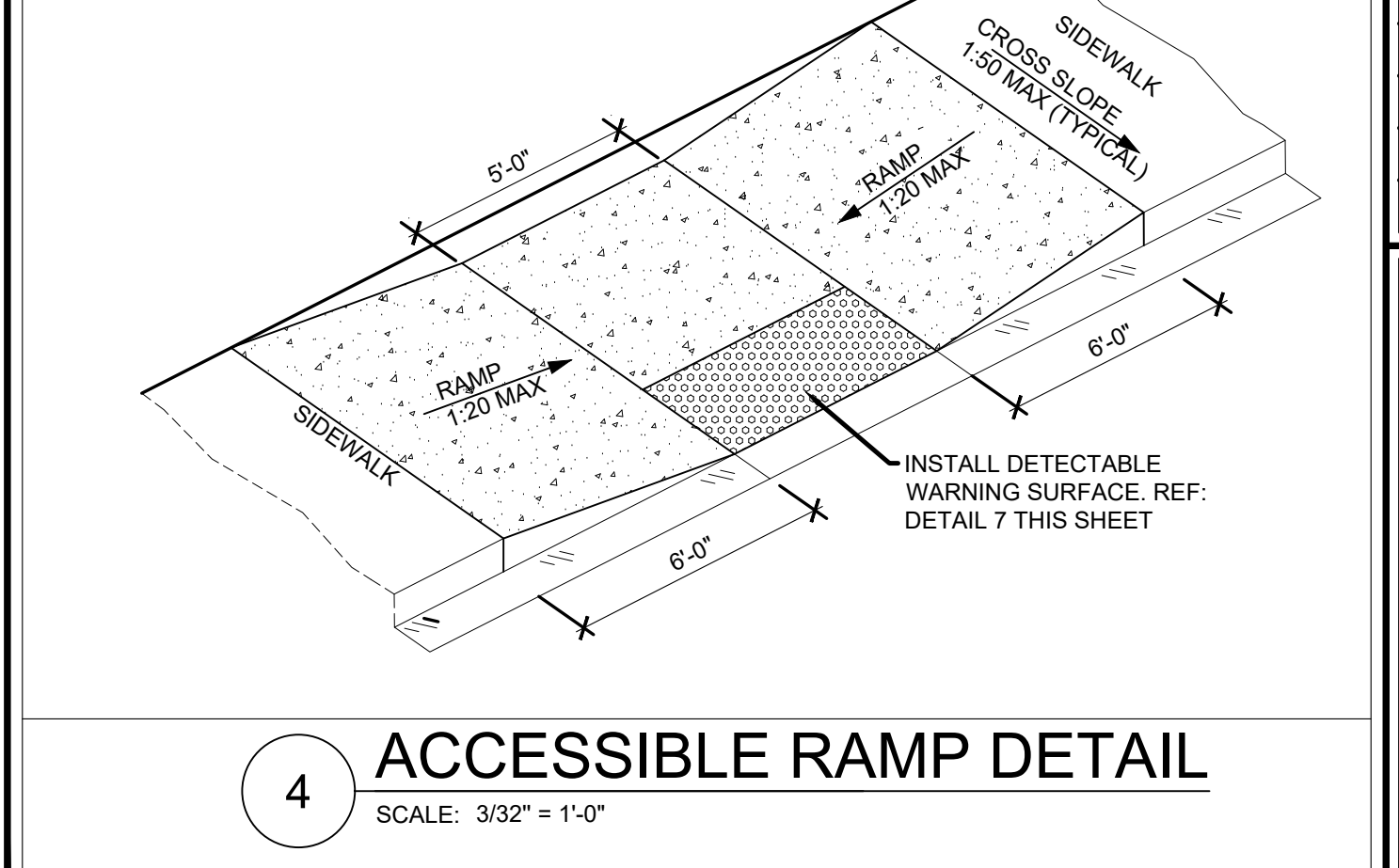
ASPHALT PAVEMENT

1 1/2" COMPACTED SAND FILL

FOR SUB-SURFACE RE: CIVIL DWGS.



4 ACCESSIBLE RAMP DETAIL  
SCALE: 3/32" = 1'-0"



8 PAVER DETAIL  
SCALE: 3/4" = 1'-0"

8 PAVER DETAIL  
SCALE: 3/4" = 1'-0"

EDGEING STRIP - 8" CONCRETE TYPICAL

1 1/2" ASPHALTIC CONCRETE SURFACE COURSE, REFER TO CIVIL DWG'S

4" LIMEROCK BASE (LBR 100)

1" SAND LEVELING COURSE

COMPACTED SUBGRADE

FILL JOINTS W/ SAND COMPACT TO TIGHTEN PAVERS INTO PLACE

BEVELED, FLAT EDGED CLAY PAVERS BRICK DIMENSION: 4" X 8" THICKNESS: 2 3/8"

10 BIKE RACK DETAIL  
SCALE: 3/8" = 1'-0"

27.54

38.07 ± .25

10.53 REF.

2.43

.50" GAL. DRAIN HOLE BOTTOM SIDE ONLY TYP. 2 - PLC'S

.250" THRU. GAL. DRAIN HOLES

2" SCH. 40 STEEL PIPE

1/2" RE-BAR

DTI ARCHITECTS  
Associates, Inc. AA26001933  
ARCHITECTURE | PLANNING | INTERIOR DESIGN  
14125 NW 80th Avenue Suite 303  
Miami Lakes - Florida - 33016  
info@dtiarchitect.com  
www.dtiarchitect.com

STATE OF FLORIDA  
CARLOS PIZARRO  
AR0013079  
REGISTERED ARCHITECT  
Carlos Pizarro, R.A.  
AR - 0013079

Revisions:  
12.01.2025 REVISION  
01.07.2026 REVISION

OWNER / DEVELOPER:  
RED LINK MANAGEMENT CORP  
2750 NE 485TH ST. #304  
AVENTURA, FLORIDA 33180

PROJECT:  
FOLIO 4942-03-27-0012  
PROPOSED SHELL BLDG @  
2100 WEST ATLANTIC BLDG  
2100 W ATLANTIC BLVD  
POMPANO BEACH, FLORIDA 33069

Job Number: 24109.01  
File name:  
Issued Date: 05-14-2025  
Drawn by: A.S  
Checked by: T.R.

SHEET NAME  
SITE PLAN DETAILS  
PZB  
PZ25-1200002 SHEET NUMBER  
05/27/2026 SP-1.5